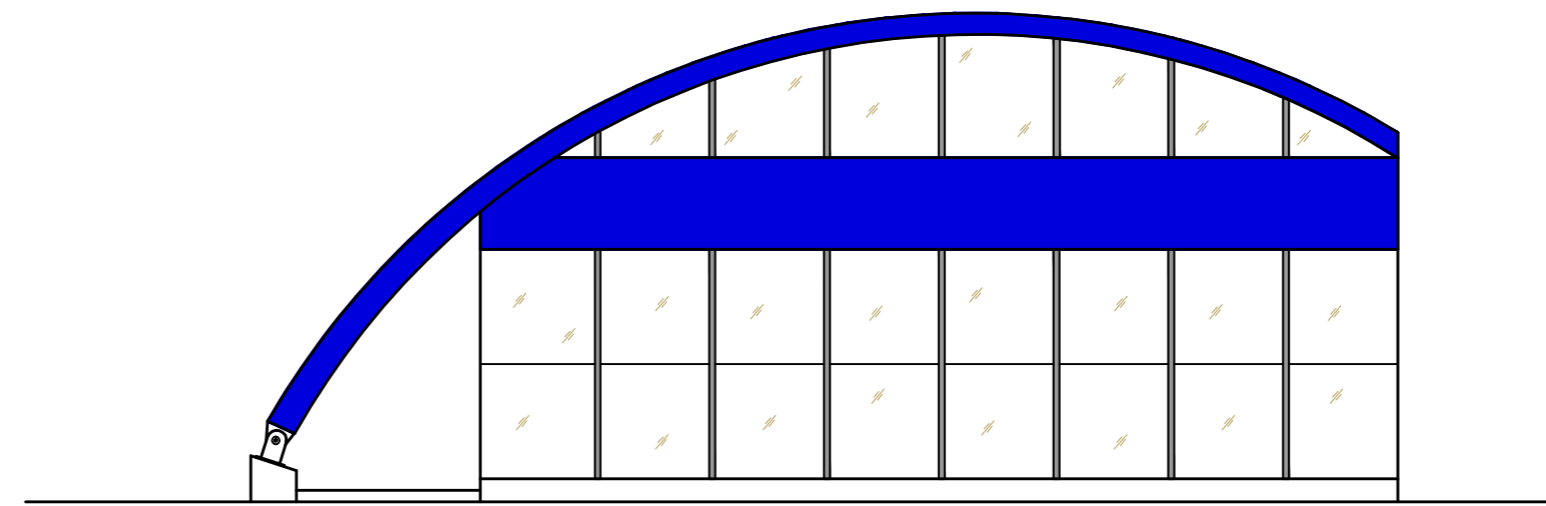
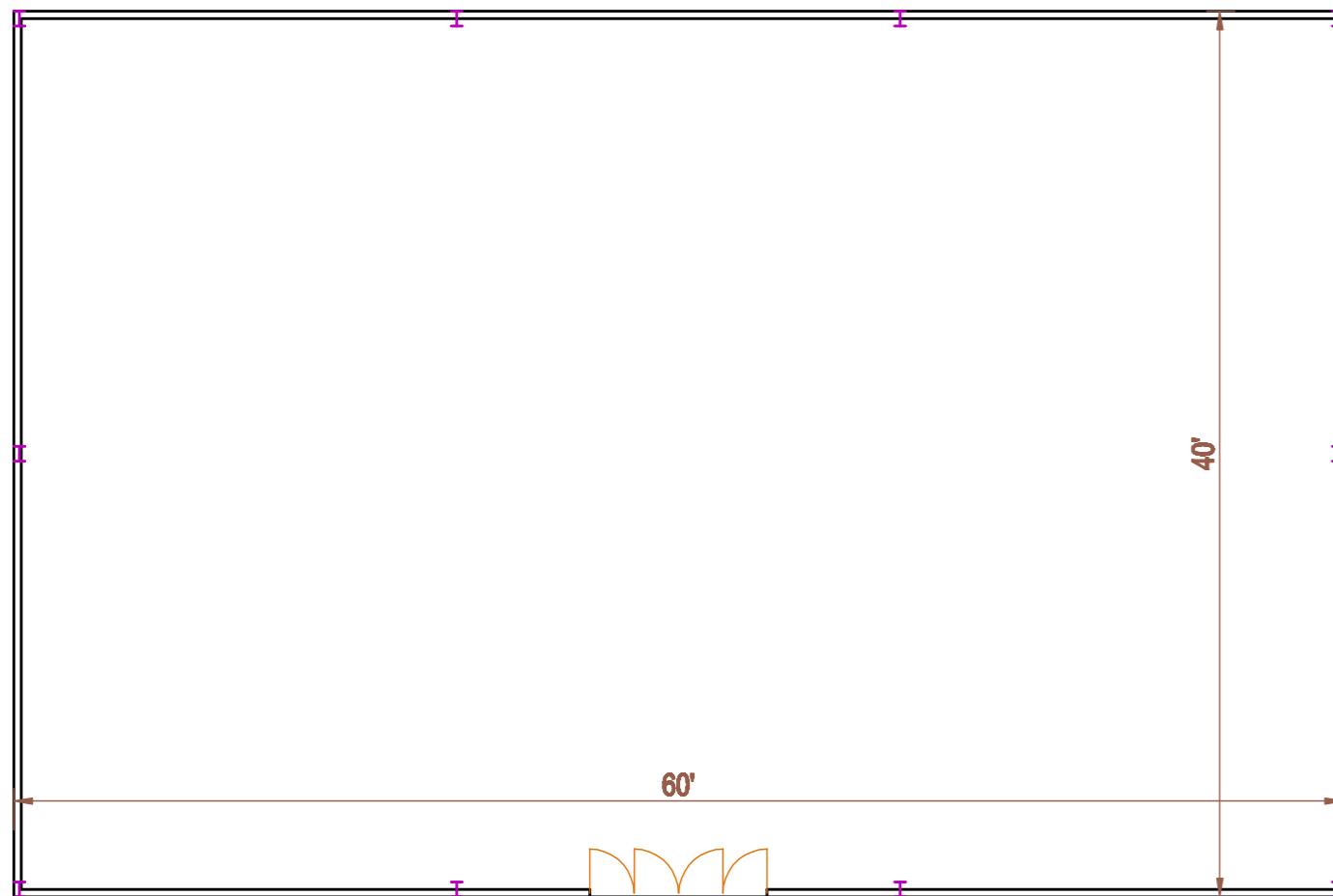


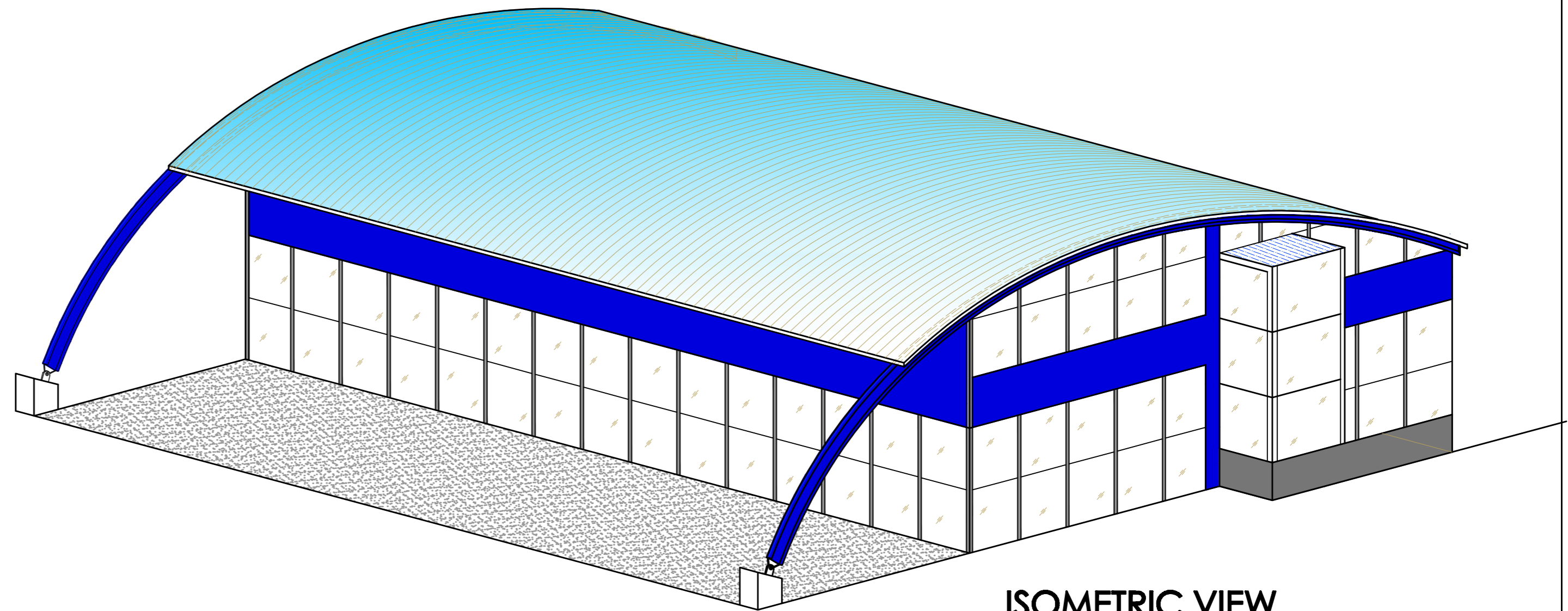
FRONT ELEVATION



SIDE ELEVATION



PLAN



ISOMETRIC VIEW

PROPOSED FERRY TERMINAL FOR  
GLOBAL PROJECTS DEVELOPMENT (PVT)LTD.  
MALDIVES

DESIGNED BY : MAHENDRA ENGINEERING (PVT)LTD.  
376, COLOMBO ROAD, PEPILYANA, SRI LANKA.

DATE : 25.10.2010

SCALE : NOT TO SCALE